



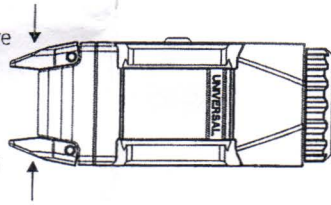
LIGHT OPERATION

Momentary

Press and hold either paddle for more than 1/2 second. Release pressure off paddle to turn light off.

Constant

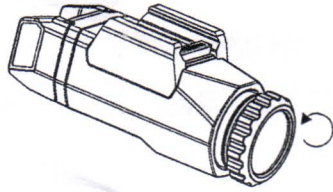
Quickly press either paddle. Pressing either paddle will turn the light off.



The APL features a patented ambidextrous switching paddle system for easy operation. The position of the paddles are very natural and facilitate transitional finger movements from pistol to paddle switch to the trigger.

LOCKOUT SYSTEMS

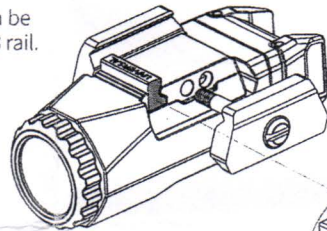
To lockout the APL unscrew the head 1/4 rotation to prevent accidental discharge during regular use or storage.



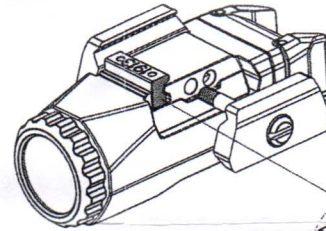
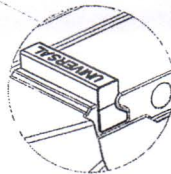
RAIL BAR INTEROPERABILITY

APL has an interchangeable rail bar that can be used for the Universal rail and MIL-STD 1913 rail.

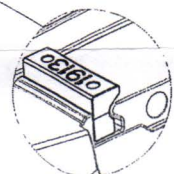
To change rail bars, turn the clamp screw until completely loosened. Remove clamp from body. Remove the rail bar and rotate it to opposite orientation. Place the rail back into the groove and the clamp back into place. Tighten screw until clamp is secured to the body.



Universal Rail



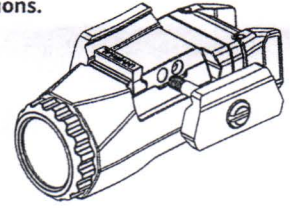
MIL-STD 1913 Rail



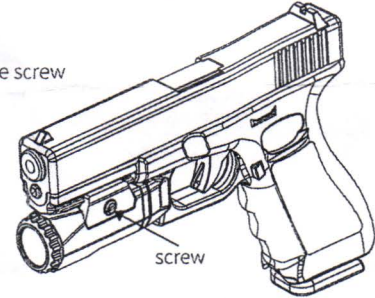
MOUNTING TO PISTOL

See weapons handling safety instructions.

1. Turn clamp screw until completely loosened.
2. Place APL rail into desired groove of pistol.
3. Tighten screw until secured to pistol.



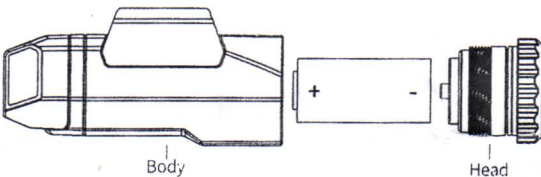
To dismount light, loosen the screw until completely off pistol. Remove light from pistol.



BATTERY REPLACEMENT

See weapons handling safety instructions.

1. Unscrew head to remove it from body.
2. Insert one 123a battery into body. Positive (+) side first as shown in the figure below.
3. Screw head back into body.



BATTERY WARNING

Lithium batteries can explode or cause burns if recharged, shorted, disassembled or exposed to water, high temperatures of fire. Follow battery manufacturer's guidelines for safe storage, use and disposal.

If light has been submerged, dry exterior of light prior to replacing batteries. Fresh and salt water will damage internal electronics and batteries.

Do not use counterfeit or inferior quality batteries, as they do not meet safety and performance standards and may cause personal and property damage. Ensure safety and performance by purchasing established brands, such as Duracell, Energizer, Panasonic or Rayovac.

MAINTENANCE/CLEANING AND WARRANTY ON BACK

FIREARM AND APL SAFETY WARNINGS

Your APL Auto Pistol Light is designed for use with destructive weapon systems. Improper operation or misuse of the APL with these weapon systems could lead to personal injury or death of the operator or others within weapons range. Safe firearms handling procedures must be practiced at all times.

Before handling the weapon with the APL attached, read and understand the entire contents of your firearm manual and the APL instructions, especially the safety precautions and procedures for safe firearms handling. Always practice safe firearms handling techniques. Failure to comply with correct safety precautions and safe firearms handling techniques can result in serious injury, damage to property or death.

Never point the firearm at anything or anyone that you don't intend to shoot. Always keep your finger outside the trigger guard and off the trigger until you are ready to fire the weapon.

Always verify that the chamber of the weapon is empty or "clear" before attempting to mount or dismount the APL.

Follow the cleaning procedures as set forth in the manual of your firearm. Always remove the APL from the firearm when performing maintenance, cleaning or replacing the battery.

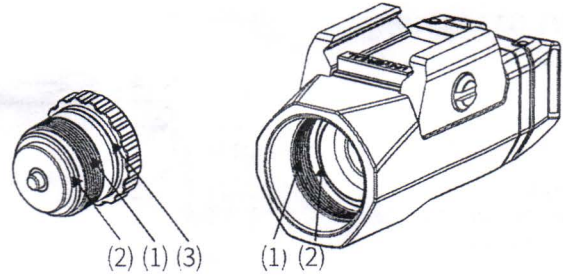
Do not operate the APL around flammable/combustible materials or in flammable atmospheres involving evaporated gasolines, or where paints, solvents or other flammable liquids are stored.

MAINTENANCE/CLEANING INSTRUCTIONS

APL requires minimal maintenance from time-to-time.

See weapons handling safety instructions.

1. Clean threads (1) of head and body with alcohol swab.
2. Clean contact surfaces (2) of head and body with alcohol swab.
3. Apply thin coat of silicon-based lubricant to rubber o-ring (3) of head.
DO NOT USE A PETROLEUM-BASED LUBRICANT.



WARRANTY: Emissive Energy Corp. (EEC) warrants our products to be free of defect in workmanship and materials for the lifetime of the original owner. We will repair or replace the product, at our discretion, if it is determined by us to be defective. In countries or jurisdictions in which specific restrictions exist on lifetime warranties, EEC provides a 10-year limited warranty. Damage to the product from misuse, abuse, neglect, disassembly, defective batteries or altering the product from its original state voids the warranty. Battery power depletion and battery expiration is not covered. This warranty is in addition to and does not affect your statutory rights with respect to faulty goods. Except as specified above or prohibited by applicable law, all express or implied conditions and warranties, including, without limitation, any implied warranty or condition of merchantability or fitness for a particular purpose, or accuracy of any informational content, are hereby excluded and disclaimed by EEC; and in no event will EEC be liable for any special, direct, indirect, consequential, incidental, or punitive damages howsoever arising and regardless of the theory of liability, even if advised of the possibility of such damages. Products, prices, availability, specifications are subject to change or cancellation at any time without notice.

WARRANTY CLAIMS: Factory issued return authorization is required. For return or repair, contact Customer Service at 401-294-2030 or e-mail info@inforce-mil.com to obtain a Return Authorization number (RA#). Package the item securely and return. UPS, FedEx, Ground or USPS shipment is recommended, which allows the package to be tracked and insured. Replacements cannot be made on products that are not received. RA# must be clearly marked on the outside of the package containing the INFORCE product. Mail to: Emissive Energy Corp., Attn: Returns Department, 135 Circuit Drive, North Kingstown, RI 02852.