

TASER® C2 Operating Manual



Citizen



TASER

IMPORTANT SAFETY AND HEALTH INFORMATION

Read, understand and follow the warnings and safety instructions contained in the enclosed Product Warnings document included with this weapon. The most current warnings are posted on our Web site at www.TASER.com. Do not attempt to use this device until you have read and understood this manual. This warning label appears on TASER device models.



TASER® electronic control devices for citizens are weapons designed for lawful self-defense or defense of others by temporarily incapacitating a person from a reasonably safe distance while reducing the likelihood of serious injuries or death. Though they have been found to be a safer and more effective alternative when used as directed to other traditional self-defense use-of-force tools and techniques, it is important to remember that the very nature of self-defense, use of force, and physical confrontation or incapacitation involves a degree of risk that someone will get hurt or may even be killed due to physical exertion, unforeseen circumstances and/or individual susceptibilities.

OPERATIONAL SAFETY

To minimize the risk of injury before, during, and after use, consider the following:

Minimize Risks Before Use

- **Read and Heed.** Read, understand and follow all warnings and instructions before using the TASER C2.
- **Complete Training First.** Do not attempt to use a TASER device unless you have read and understood this manual.
- **Obey Applicable Laws.** Carry and use the TASER C2 in accordance with applicable federal, state, and local laws.
- **Store in a Secure Location.** Store the TASER C2 in a secure location inaccessible to children and other unauthorized persons. TASER devices are not toys, and users should avoid any inappropriate brandishings, deployments and/or activations, which may result in serious bodily harm to the user or others, including animals.



Minimize Risks During Use

- **Avoid Torturous or Other Misuse.**
- **Assume Device is Loaded.** Always assume that a TASER device is loaded. Do not point a TASER device at anything you do not intend to hit.
- **Avoid Unintentional Activation.** Keep fingers away from the trigger button until ready to use.
- **Keep Body Parts Away From Front.** Keep your hands and body parts away from the front of the TASER Cartridge.
- **Avoid Static Electricity Discharge.** Avoid contact between static electricity and the TASER Cartridge because static electricity can cause unexpected discharge.
- **Do not point the laser at the eyes or stare into the beam.**

FLAMMABILITY

Beware – TASER Devices Can Ignite Explosive Materials, Liquids or Vapors. These include gasoline, other flammables, explosive materials, liquids, or vapors (e.g., gases found in sewer lines, methamphetamine labs, and butane-typelighters). Some self-defense sprays use flammable carriers such as alcohol and could be dangerous to use in immediate conjunction with TASER devices. Some self-defense sprays labeled “non-flammable” may ignite when used in conjunction with TASER devices.

OWNERSHIP

The TASER C2 is shipped in a pre-active mode and will not be usable until a background check is completed. See the New Weapon Activation section for more details.

Do not give a TASER device away as a gift or sell it without filling in the registration card or transfer card. Do not give or sell a TASER device to anyone not authorized to own it. For more information, see the Legality section of this manual. Taking a TASER device out of the country is prohibited by law.

If traveling on an airplane (domestic U.S.), you must put the TASER device in your checked luggage; it cannot be carried on board. Although the TASER device is not classified as a firearm, you should carry the TASER device in a hard case and advise the Transportation Security Administration (TSA) and airline personnel prior to bag screen that you are carrying the TASER device in your checked baggage.

Do not point a TASER device at any law enforcement officer or do anything that would cause law enforcement officers to feel threatened by your use of the TASER device. Because the TASER device is able to incapacitate a person, law enforcement officers may be justified to use lethal force to protect themselves.

Do not carry TASER Cartridges in your pockets as they can be fired by electrostatic discharge. It is recommended that you carry the TASER device only in a holster or carrying case.

WHAT IS THE TASER C2?

The TASER C2 is a self-defense electronic control device manufactured by TASER International, Inc. Electronic Control Devices (ECDs) use propelled wires or direct contact to conduct energy to affect the sensory and motor functions of the nervous system.

The TASER C2 uses a replaceable cartridge containing compressed nitrogen to deploy two small probes that are attached to the TASER C2 by insulated conductive wires with a maximum length of 15 feet. The TASER C2 transmits electrical pulses along the wires and into the body affecting the sensory and motor functions of the peripheral nervous system. The energy can penetrate up to two inches of clothing, or one inch per probe.

NEUROMUSCULAR INCAPACITATION (NMI)

The human nervous system communicates with simple electrical impulses. The command center (brain and spinal cord) processes information and makes decisions. The peripheral nervous system includes the sensory and motor nerves. The sensory nerves carry information from the body to the brain (temperature, touch, etc.). The motor nerves carry commands from the brain to the muscles to control movement and can be involuntary in response to the sensory information. An example would be the involuntary muscle reaction to pull a hand away from a hot object.



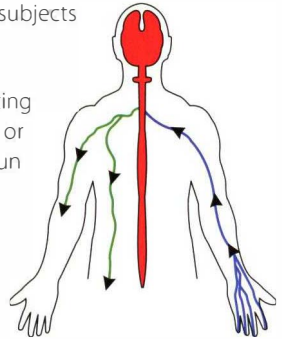
TASER technology uses similar electrical pulses to cause stimulation that affects the sensory and motor nerves. Neuromuscular Incapacitation (NMI) occurs when a device is able to cause involuntary stimulation of both the

sensory nerves and the motor nerves. It is not dependent on pain and is effective on subjects with a high level of pain tolerance.

Previous generations of stun guns could primarily affect the sensory nerves only, resulting in pain compliance. A person with a very high tolerance to pain (e.g., a drug abuser or a trained, focused fighter) might be able to fight through the pain of a traditional stun gun.

COMMON EFFECT OF NMI

The use of TASER technology is designed to cause incapacitation and involuntary muscle contractions, making secondary injuries a possibility. These potential injuries include but are not limited to: cuts, bruises, impact injuries, and abrasions caused by falling, and strain-related injuries from muscle contractions such as muscle or tendon tears, or stress fractures. These injuries are secondary in nature and not directly attributable to the electric stimulation of the TASER device, but are possible consequences of the involuntary muscle contractions the TASER device induces to produce incapacitation. Some of the effects may include:



- Subject may fall immediately to the ground and be unable to catch him/herself.
- Subject may yell or scream.
- Involuntary muscle contractions of varying degrees.
- Subject may freeze in place with legs locked.
- Subject may feel dazed for several seconds/minutes.
- Potential vertigo.
- Temporary tingling sensation.
- May experience critical stress amnesia (may not remember any pain).

For a full list of warnings, see www.TASER.com.

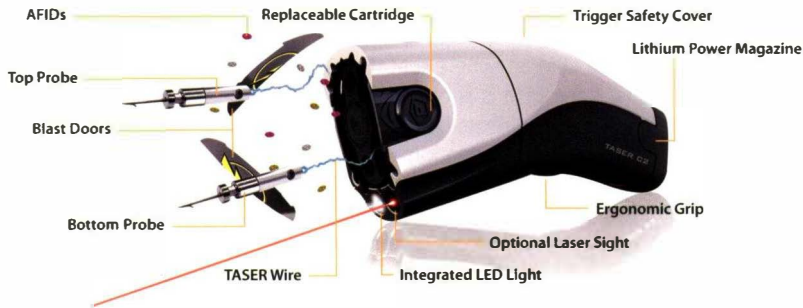
BASIC C2 ELECTRICAL THEORY

- Electricity must be able to flow between the probes or the electrodes.
- Electricity generally follows the path of least resistance between the probes.
- The greater the spread between the probes on the target, generally the greater the NMI effectiveness.
- Electricity will generally not pass to others in contact with the subject unless contact is made directly between or on the probes.
- Electricity can arc through clothing.
- Exposure to water will not cause electrocution or increase the power to the subject (the electrical charge is fixed inside the TASER device, and will not increase significantly even with environmental changes).

Modern pacemakers and implanted cardiac defibrillators withstand external electrical defibrillators at least 800 times stronger than the TASER conducted energy pulses.

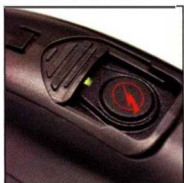
TASER C2 AND CARTRIDGE FEATURES

The C2 is constructed of impact resistant sonic welded polymer and weighs approximately 7 ounces. Various color options are available. See www.TASER.com for the most current specifications.

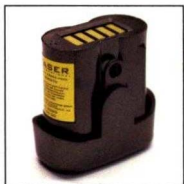


SAFETY COVER

The sliding cover acts as a safety switch to minimize the possibility of inadvertent activation of the trigger button. When the cover is open, the trigger button is exposed, the unit is ARMED, and a green LED illuminates to indicate power to the device.



- Safety Cover Closed (SAFE).
- Safety Cover Open (ARMED) and ready to deploy.
- If the C2 safety cover is left in the open (ARMED) position for more than 20 minutes, the system will shut down to preserve LPM battery life.
- To re-arm the weapon, simply cycle the safety cover to the closed (SAFE) position, then back to the open (ARMED) position.



POWER SUPPLY

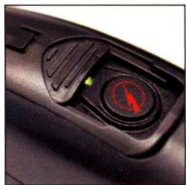
The Lithium Power Magazine (LPM) is a lithium energy cell power supply system for the C2. For low battery detection, the C2 will momentarily load the battery when first powered up (ARMED). The microcontroller will then sense the battery voltage and determine whether or not the battery is marginal or operating in a marginal condition (-20 °C). The C2 will then light the green LED to indicate a "good" battery or the yellow LED for a "bad" battery.

Do not store the LPM anywhere that the gold contacts on the top of the LPM may touch metal objects. If the LPM is short-circuited, the LPM will malfunction and the energy lost during the short circuit will not be registered or tracked in the LPM. Visit www.TASER.com for more detailed warranty information.

The LPM has enough power for approximately 50 30-second firings depending on temperature and other factors. The LPM will use more energy in colder weather than in warm weather. For the most current specifications, see www.TASER.com.

POWER LED

The power LED is located under the Safety Cover. A green LED indicates the trigger button is ARMED. A red LED indicates that the weapon has not been activated.



ARMED



NOT ARMED

TRIGGER BUTTON

The trigger button is located under the safety cover and is ARMED when the safety cover is in the open position. If the C2 has not been activated, the trigger button is used to enter the authorization code. After the code has been entered, momentarily depressing the trigger button results in an automatic discharge for 30 seconds.



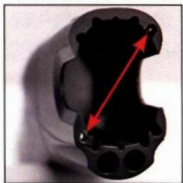
See the How To Use the C2 section for more details.

WARNING: In the event of an accidental discharge, immediately move the safety cover to the closed (SAFE) position to stop the discharge cycle.



SPARK DURATION

When the C2 is deployed, it delivers a 30-second Shaped Pulse energy burst of short-duration electrical pulses.



ELECTRODES

The front of the C2 contains two metal electrodes. These electrodes direct the charge to the electrodes on the cartridge to initiate deployment of the probes. In addition, the electrodes provide the ability to use the C2 in a “drive-stun” mode as a traditional stun gun-type device.



LASER AND LED

The LED illuminates whenever the safety cover is open. In addition, the optional laser provides assistance for aiming and is the approximate orientation of the top probe.



NEOPRENE SOFT CASE

A soft body holster is available for the TASER C2.



TASER C2 CARTRIDGE

Cartridge specifications are available at www.TASER.com and are subject to change without notice.



C2 CARTRIDGE

Avoiding Unintentional Discharge

Never attempt to open or modify a TASER C2 Cartridge. Tampering with a live TASER Cartridge could cause it to discharge or malfunction (which may result in injury).

Handle all TASER Cartridges with care. Probes may deploy unexpectedly if exposed to physical shock.

Additionally, the firing sequence for all TASER Cartridges is designed to be initiated by an electrostatic discharge delivered by the TASER device. This is an important design and functional element for the TASER device and cartridge. However, an electrostatic discharge can come from many sources. When an electrostatic discharge, regardless of the source, contacts the front of a TASER Cartridge, it is possible for the cartridge to discharge. Therefore, avoid contact between static electricity and the TASER Cartridge because static electricity can cause unexpected discharge.

TASER Cartridges should be kept away from conditions known to create an electrostatic discharge, such as rubbing cloth (i.e., jacket liner) across a cartridge in an environment known to create static shocks.

Although highly unlikely, it is possible for TASER Cartridges to deploy outside of the TASER device, or in a device that has not been activated due to contact with an electrostatic discharge. Care should be taken to keep electrostatic discharge away from TASER Cartridges.

Occasionally, blast doors will be knocked off the front of a cartridge. Because those cartridges cannot be relied upon to discharge, TASER International recommends disposing of these cartridges. TASER operators should not attempt to fire a cartridge with no blast doors on it unless they are facing an immediate threat and do not have the time or option to reload. Attempting to deploy a cartridge with no blast doors could result in a charge being created and held in the wires. Any conductive material that comes into contact with the front of the cartridge, even after the cycle has ended, could draw the charge to the ignition pin and deploy the probes.



PROTECTIVE ANTI-FELON IDENTIFICATION (AFID) TAGS

Every time a TASER C2 Cartridge is deployed, at least 24 small confetti-like AFID tags are ejected. Each AFID is printed with the serial number of the cartridge deployed, allowing law enforcement agencies to determine the registered owner of the cartridge and track citizen use if ever used in a criminal act.

ACTIVATING A NEW TASER C2 (U.S. Only)

The C2 is shipped in a pre-active mode, and will not discharge until the background check is complete and the unique activation code is entered in the C2.

Obtaining an Activation Code

1. Go to www.TASER.com/C2 activation.
2. Complete the online instructions to complete the criminal background check. NOTE: A credit inquiry will NOT be generated. The background check is for felony convictions only.
3. Verify that you enter the correct serial number of the C2 since the activation code is paired with the appropriate weapon.
4. When the background check is complete, you will receive an e-mail message that includes your five-digit activation code.
5. The five-digit activation code is entered using the safety cover and trigger button.

Activating the C2

1. Verify that the TASER C2 Cartridge is removed from the C2.
2. Slide the safety cover open and verify that the red LED is illuminated.
3. Enter the first digit of your activation code by pressing the trigger button (e.g., if your activation code starts with "5," press the trigger button 5 times).
4. Close the safety cover completely.

5. Follow steps 2 through 4 for the remaining digits of your activation code.
6. After entering the digits, slide the safety cover to the OPEN position and verify that the red LED is extinguished and the green LED is flashing.
7. When the green LED stops flashing (approximately 30 seconds), you can arm and use your TASER device.
8. If the green light does not flash, remove the LPM, wait five seconds, and re-insert the LPM. This will reset the pre-active state and permit you to enter the entire code sequence again.
9. If the C2 cannot be activated in 100 attempts, return it to TASER International. See the RMA Process section for more information.

OPERATING THE C2 SPARK TEST

A spark test should be conducted once every six months (as you would check your smoke detector batteries). The reasons for the spark test include:

- To verify the TASER device is working.
- To verify that the LPM is adequately charged.

Spark Test Instructions

1. Verify that the safety cover is in the closed (SAFE) position.
2. Verify that the TASER Cartridge is removed. A spark test should never be conducted with a TASER Cartridge in the device.
3. Point the device in a safe direction (such as the floor) and verify that your fingers and no part of your body are in front of the device.
4. Place the safety cover in the open (ARMED) position.
5. Depress the trigger button and confirm sparking across the electrodes at a rapid rate.
6. Place the safety cover in the closed (SAFE) position.

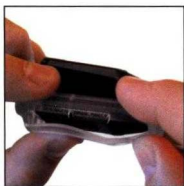


LOAD THE TASER CARTRIDGES

WARNING: Never place your hands, fingers, or any part of your body in front of the cartridge. When loading and unloading, always hold the cartridge on the sides.

LOADING:

1. Verify that the safety switch is in the closed (SAFE) position.
2. Point the device in a safe direction.
3. Remove the cartridge cover.
4. Place the cartridge into the front of the weapon until an audible click is heard.
5. Verify that the cartridge is secure by gently pulling on the sides of the cartridge.



UNLOADING:

The C2 Cartridge is designed to ensure a secure fit when inserted in the C2. The placement of the wire bundles behind the insertion tabs aids in providing a secure fit. It is very difficult to remove a cartridge with the wire in place (that is, when the cartridge has not been deployed). To remove a live cartridge, follow these steps:

1. Verify that the safety cover is in the closed (SAFE) position.
2. Ensure that the front of the C2 is pointed in a safe direction.
3. Do not place any part of your hands or other body parts in front of the C2.
4. Depress both tabs until the cartridge releases. Note that it might take two hands to depress the tabs.
5. Re-install the clear cartridge cover on the cartridge.



Removal of an expended cartridge does not require the additional force because the wires are no longer behind the tabs.

The TASER Cartridges for the C2 are specifically designed so there is no “up” or “down” position – enabling you to quickly reload one in a stressful situation without worrying about putting it in upside down.

AIMING AND PROBE PLACEMENT

Normally, aim the laser of the device at one of the large muscle groups (center of mass) such as the torso or thigh areas, etc.

The top probe impacts the target near the laser beam; however, the probe impact distance from the laser beam will vary depending on the distance between the device and the target. See www.TASER.com for current specifications.

The bottom probe impacts at an 8-degree angle from the top probe. This results in a spread of approximately 1’ for every 7’ of distance from the target. Greater probe spread increases effectiveness. If possible, a minimum 4-inch spread between the probes is recommended.



Hold the C2 device so that the cartridge is vertical for an upright target.

If the subject is on the ground and there are no other attackers, place the TASER C2 on the ground (don’t drop it as the impact could damage the unit) and leave the area. Do not attempt to retrieve the TASER device. TASER International will replace the TASER C2 for free upon receipt of a police report (see limited lifetime warranty information). (U.S. only.)

WARNING: Avoid head, face, throat, or groin exposure unless operator safety dictates otherwise.

USING THE TASER C2

The TASER C2 is a serious, state-of-the-art defensive weapon and should be treated accordingly. Although the unit is designed to be as nonviolent as possible in stopping a combatant, its use can result in injuries, including but not limited to, a probe embedded in an eye or secondary injuries related to falling. Be sure, however, not to fire at a subject who is over 15 feet or 4.5 meters away (measure 15 feet or 4.5 meters to see how far this is – it will probably be further than you think). If you do deploy at someone more than 15 feet or 4.5 meters away, the probes will not have sufficient TASER wire to reach the target.

The TASER device is to be used only for lawful self-defense or in the defense of others. Check your state and local laws for applicable regulations.

Depending on local and state laws, the TASER C2 may be kept in the house for home protection, or carried in a car, purse, etc. for personal protection when away from home. Be sure to research each state's applicable laws prior to possessing or transporting the device across state lines, or into other states where laws may vary.

A TASER device is not a substitute for other preventive self-protection actions such as ensuring doors are locked, and parking in well-lighted areas.

Personal Defense

1. Remove the TASER C2 from its holster and verify that the TASER Cartridge is installed.
2. If a subject approaches in a suspicious or threatening manner, place the safety cover in the open (ARMED) position.
3. Aim the laser beam at the center of the attacker's torso or the attacker's legs.
4. Scream and shout verbal commands to "get away," when feasible. It is possible that the subject will flee based on the noise and laser.
5. If the subject gets within 15 feet and you have reason to fear for your safety, deploy the TASER C2.

6. Set the TASER C2 down and immediately seek safety. This may include re-entering a safe building, entering your car and driving away, etc.
7. As soon as it is safe to do so, call 911 and report the specific location of the threat.
8. Do not hesitate to leave the C2 at the scene of the attempted assault. Send a copy of the police report to TASER International and we will replace the weapon at no charge. See www.TASER.com for more information on the replacement guarantee. (U.S. only.)

WHAT IF I MISS?

The laser sight is an extremely valuable aid for proper aiming. However, there is always the chance for a missed shot, especially in a dynamic, stressful situation and you must be prepared to take alternative actions to protect yourself in case of a missed shot or reduced effectiveness.

“Silence is Golden”

The TASER device’s electrical current is relatively quiet in actual human use. Therefore, the device may make very little sound when the probes are successfully deployed on a human target. In contrast, some practice conductive targets produce a loud sound when used because the energy is arcing in the air.

If the electrical current is loud during the device’s use on a human target, and the subject is not reacting as expected, the current may be shorting out and may not be effective. Deploy a second cartridge or consider other options in this situation.

Potential Causes of Reduced or No Effectiveness

- Loose or Thick Clothing. The current from the C2 is capable of penetrating approximately 2 cumulative inches of clothing, or one inch of clothing per probe.
- Miss or Single Dart Hit. The current must pass between the probes. If one probe misses, a second cartridge should be deployed if practical. Also, using the C2 in the drive-stun mode as described below will also complete the circuit between the single probe and the device electrode.

- Low Nerve or Muscle Mass. If the probes impact in an area where there is very little muscle mass (e.g., the side of the rib cage), the effectiveness can be significantly diminished.
- Limited Probe Spread. Probe spreads of less than 4 inches (including drive-stun) result in little or no effect from NMI and become primarily a pain compliance option. If a close range deployment resulting in limited probe spread does not incapacitate the subject, apply a drive stun, as described below, to a point away from the probes. This will effectively widen the contact area and can achieve NMI.
- Wires Break. If a wire breaks (e.g. during a struggle), the current will not flow to the probes. Drive-stun is still available.

DRIVE-STUN BACKUP

Drive-stun capability is available with or without a TASER Cartridge installed. The drive-stun mode will not cause NMI and generally becomes primarily a pain compliance option. Probe deployment is usually considered more desirable, even at close range. Some of the advantages of probe deployment include:

- Drive-stun is only effective while the device is in contact with the subject or the subject's clothing. As soon as the device is moved away, the energy stops. Deploying the probes allows the user to create distance between the user and the subject while maintaining control.
- Due to automatic reflex actions, most subjects will struggle to separate from the TASER device. When the TASER device is used in the drive-stun mode and the subject struggles to get away it may be difficult to maintain contact between the device and the subject.
- If the probes are deployed, even at very close range, the user may be able to use drive-stun to another portion of the body that is farther away from the probes, thereby resulting in enhanced NMI effect.

If the drive-stun is not effective, evaluate the location of the drive-stun and consider an additional cycle to a different pressure point.

When using the drive-stun, push (drive) the front of the TASER C2 firmly against the body of the subject. Simply “touching” the C2 against the subject is not sufficient. The subject is likely to recoil and try to get away from the stun electrodes. It is necessary to aggressively drive the front of the C2 into the subject for maximum effect.

The drive-stun works more effectively when aggressively applied to pressure points on nerve bundles. This includes the brachial area, common peroneal, mastoid, and pelvic triangle. The TASER C2 must be actively depressed or aggressively driven into the nerve bundles in a “drive-stun” manner to be effective in the drive-stun mode.

RECOMMENDED DRIVE-STUN AREAS FOR MAXIMUM EFFECT

Drive the C2 into the following areas for maximum effectiveness.

- Carotid (sides of neck) (see warning below).
- Brachial plexus tie-in (upper chest).
- Radial (forearm).
- Pelvic triangle (see warning below).
- Common peroneal (outside of thigh).
- Tibial (calf muscle).

WARNING: Use care when applying a drive-stun to the neck or groin. These areas are sensitive to mechanical injury (such as crushing to the trachea or testicles if applied forcefully). However, these areas have proven highly effective targets. These areas should only be targeted when citizens are defending themselves from violent attacks.

C2 SUPPLEMENTAL INFORMATION

Changing the LPM

The unit is shipped with the LPM pre-installed. To change the LPM:

1. Place the safety cover in the closed (SAFE) position.
2. Remove the TASER Cartridge.
3. To unload the LPM, depress the side buttons on both sides of the battery and remove the LPM from the handle of the weapon.
4. Wait approximately 5 seconds, then install the new LPM. Ensure that the LPM is fully inserted into the C2. Failure to do so could result in a damaged C2 or a loss of power during a deployment.

Uploading Software Revisions

The C2 internal software provides functionality for all aspects of the device.

You can always install a previous version LPM in the weapon. The software will not program the C2 to an older version and the weapon will remain at the higher of the software version in the weapon or the LPM.

C2 MAINTENANCE AND CARE

- The C2 is a sensitive electronic device, and should be handled with care. Avoid dropping a C2. Do not use a C2 that has a cracked handle.
- Check the LPM regularly.
- Check the expiration of the TASER Cartridges (the 5-year expiration is listed on the serial number label). Do not use an expired TASER Cartridge.
- Secure the C2 in a protective holster when not in use.
- Avoid exposing the C2 to excessive moisture or water.
- See the troubleshooting guide at www.TASER.com for additional instructions.

Dropped or Wet C2

- Safety cover closed (SAFE).
- Point in a safe direction and remove the cartridge.
- Remove the LPM.
- Dry the C2 thoroughly (at least 24 hours).
- Reinstall the LPM.
- Safety cover open (ARMED).
- If the C2 discharges without pressing the trigger button, remove the LPM and return the C2 to TASER International immediately.
- Spark test for a full 30 seconds.
- If the C2 does not function properly during the spark test, return it to TASER International immediately.
- If the spark test is normal, you may continue to use the C2.

TASER ONLINE TROUBLESHOOTING GUIDE

A troubleshooting guide is available by visiting the TASER Web site at www.TASER.com. If you need product support on accessories or have any other questions, please contact customer service at:

U.S.: 1.800.978.2737 or 1.480.905.2000

International: +1.800.978.2737 or +1.480.902.2000

Warranty Policy

TASER International warranty provisions are applicable on all TASER Citizen Products. See TASER International's Web site, www.TASER.com, for detailed warranty information.

RMA PROCESS

To return a TASER product for repair or service, first obtain a Return Material Authorization (RMA) number from our Web site at www.TASER.com. If you don't have Internet access, contact TASER International at the numbers listed on the previous page. See the warranty specifications on the Web site. Mail the defective product with postage prepaid together with a written description of the defect and proof of purchase within one year or proof of purchase of an extended warranty (PO, invoice, or purchase affidavit) or a check/credit authorization for the replacement schedule found on TASER's Web site, and your return address to:

TASER International, Inc., 17800 North 85th Street, Scottsdale, Arizona 85255
Attn: RMA Department

Note: The RMA number must be on the outside of the package. Be sure to include your name, physical address, and phone number. Failure to provide the required information may delay or forfeit the return of the repaired items. Any TASER device that has not been paid for or required information has not been provided during a period of 90 days after receipt of the TASER device by TASER shall be deemed abandoned and TASER may dispose of such TASER device without any compensation to Purchaser.

WARNING: If the TASER device has been exposed to bodily fluids or other biohazards, please contact the TASER customer service department at 1.800.978.2737 or 1.480.905.2000 for specific instructions BEFORE returning the weapon.

OPTIONAL ACCESSORIES

EXTENDED WARRANTIES (U.S. only)

The C2 standard warranty begins when the weapon is activated. The TASER C2 has optional one-year and three-year extended warranties. These extended warranties may be purchased at any time during the standard warranty period and must be installed before the expiration of the current warranty. The extended warranty information is programmed into a special LPM. When the LPM is inserted into the weapon, it will automatically increment the warranty expiration year one year or three years, depending on the option purchased. The LPM will then function as a regular LPM.

ADDITIONAL INFORMATION

New TASER brand products are under development. Visit our Web site at www.TASER.com for the latest information on TASER products.

Material Safety Data Sheets (MSDS) for lithium batteries and TASER Cartridges are available at www.TASER.com or by contacting TASER international.

LEGALITY

The Bureau of Alcohol, Tobacco, Firearms, and Explosives (BATFE) has classified our TASER M18-, M26-, X26- and C2-series devices as non-firearms because they use compressed gas, rather than explosives to launch the projectiles. Because M18-, M26-, X26-, and C2-series devices are not firearms, they may be carried without a permit in certain jurisdictions (check state and local laws for permit requirements in your area). The TASER device is restricted from possession by citizen users in the following states: Washington DC, Hawaii, Massachusetts, Michigan, New Jersey, New York, Rhode Island, and Wisconsin. Check our Web site at www.TASER.com for a list of known state and local laws concerning TASER devices.

WARRANTY (U.S. only)

A. General.

The following TASER International, Inc. (“TASER International”) warranty provisions are applicable on all sales or transfers of the TASER® C2 device. The term “Purchaser” shall mean any purchaser, transferee, possessor, or user of TASER International Products.

B. Limited Warranty.

TASER International warrants that its TASER C2 devices are free from defects in workmanship and materials for a period of 90 days from the date of attempted activation. TASER International agrees to repair or replace such defective product which, under normal use as defined in the instructions that accompanied the product at time of purchase, fails to function within the limited warranty period provided that the disclosed defect is determined by TASER International to be TASER International's fault. TASER International's sole responsibility under this limited warranty shall be to either repair or replace, at TASER International's sole option, any such product determined to be defective by TASER International and return it via prepaid postage. After the limited warranty period, TASER International will repair or replace any defective TASER C2 device for a charge as specified on TASER International's Web site. TASER Cartridges that are fired are deemed to have operated properly. TASER-manufactured accessories are covered under a limited 90-day warranty. Non-TASER manufactured accessories are covered under the manufacturer's warranty. This limited warranty is TASER International's only warranty for the TASER C2 device and may not be changed or enlarged by any agent, distributor, dealer, or other person. This limited warranty shall be void and TASER International shall not be responsible for any loss, damage, or other liabilities arising from alterations, additions, or repairs which are made to any TASER products by other than TASER International authorized personnel or from the use of TASER Cartridges, batteries (and cells) or other parts, components or accessories that are not manufactured or recommended by TASER International.

C. “No Questions Asked” TASER Warranty.

THE “No Questions Asked” WARRANTY FOR A TASER C2 DEVICE CAN ONLY BE PURCHASED DURING ACTIVATION OF THE C2 DEVICE. The “No Questions Asked” Warranty begins on the date of activation of the device and supersedes the 90-day limited warranty. The “No Questions Asked” Warranty is available in one (1) and three (3) year options. For customers who have purchased a “No Questions Asked” Warranty, TASER International warrants it will repair or replace any TASER C2 which fails to function for any reason from the date of purchase of the “No Questions Asked” Warranty through the balance of the warranty term. The “No Questions Asked” Warranty entitles Purchaser to one (1) free replacement for damage from any cause during the “No Questions Asked” Warranty period. The free replacement unit will have a 90-day limited warranty beginning on the date of re-activation (all replaced units will leave our facility inactivated; a certificate or code for free activation will be sent with each replacement unit). Purchaser has the responsibility to return the defective product to TASER International via prepaid postage and provide written information as to the nature of the problem. If the weapon is out of warranty, TASER International will respond with a quotation for repair costs.

D. Warranty Repair Procedure.

To make a warranty claim, you must first verify that your TASER device is within its active warranty period. To register a warranty claim, first obtain a Return Material Authorization (“RMA”) number within the warranty period from TASER International through TASER International’s Web site. If Internet access is not available, then contact TASER International by mail or toll-free telephone number at 800-418-9283. TASER International will advise what parts need to be returned for repairs.

The Purchaser has the responsibility to return the defective product to: TASER International, Inc., 17800 North 85th Street, Scottsdale, Arizona 85255 Attn: Warranty Department; via prepaid postage. The Purchaser must provide the following:

- Written information as to the nature of the defect and a check/credit authorization for the fee specified on the TASER International Web site for the TASER C2 (if applicable);
- RMA number on the outside of the package; and
- Name, address, and phone number of where to return the repaired item.

Failure to provide the required information may delay the return of the repaired item. Any TASER device that has not been paid for or required information has not been provided for during a period of 90 days after receipt of the TASER device by TASER International shall be deemed abandoned and TASER International may dispose of such TASER device without any compensation or further notification to Purchaser.

E. Warranty Exclusions.

THE WARRANTY STATED ABOVE IS THE EXCLUSIVE WARRANTY WITH RESPECT TO THE TASER PRODUCT. TASER INTERNATIONAL DISCLAIMS ANY AND ALL OTHER WARRANTIES, WHETHER EXPRESS, IMPLIED OR STATUTORY, INCLUDING, WITHOUT LIMITATION, ANY IMPLIED WARRANTIES OF MERCHANTABILITY, DESIGN OR FITNESS FOR A PARTICULAR PURPOSE OR ARISING FROM A COURSE OF DEALING, USAGE OR TRADE PRACTICE, OR ANY WARRANTY AGAINST PATENT INFRINGEMENT. IF THE EXCLUSION OF IMPLIED WARRANTIES IS PROHIBITED BY STATE LAW, THEN ANY APPLICABLE IMPLIED WARRANTIES SHALL BE LIMITED TO THE DURATION OF THE EXPRESS WARRANTY DESCRIBED ABOVE AND OTHER PROVISIONS CONTAINED HEREIN.

F. Release.

PURCHASER AGREES TO RELEASE AND SAVE TASER INTERNATIONAL HARMLESS FROM ANY AND ALL LIABILITY ARISING OUT OF DEPLOYMENT, USE OR MISUSE OF THE TASER PRODUCT, INCLUDING ANY CLAIMS FOR DAMAGES AND PERSONAL INJURIES. PURCHASER AGREES TO ASSUME ALL RISKS OF LOSS AND ALL LIABILITY FOR ANY DAMAGES AND PERSONAL INJURY WHICH MAY RESULT FROM THE DEPLOYMENT, USE, OR MISUSE OF THE TASER PRODUCT. TASER IS NOT LIABLE FOR THE FAILURE OF THE TASER PRODUCT TO PERFORM AND TASER IS NOT LIABLE FOR ANY CLAIMS MADE BY A THIRD PARTY OR BY PURCHASER FOR OR ON BEHALF OF A THIRD PARTY.

G. Limitation of Remedies.

THE REMEDIES PROVIDED FOR IN THE ABOVE WARRANTY ARE EXPRESSLY IN LIEU OF ANY OTHER LIABILITY TASER INTERNATIONAL MAY HAVE, INCLUDING INCIDENTAL AND CONSEQUENTIAL DAMAGES. TASER INTERNATIONAL'S CUMULATIVE LIABILITY TO ANY PARTY FOR ANY LOSS OR DAMAGES RESULTING FROM ANY CLAIMS, DEMANDS, OR ACTIONS ARISING OUT OF OR RELATING TO THE TASER PRODUCT SHALL NOT EXCEED THE PURCHASE PRICE PAID TO TASER INTERNATIONAL BY PURCHASER FOR THE PRODUCT. IN NO EVENT WILL TASER INTERNATIONAL BE LIABLE FOR ANY SPECIAL, INDIRECT, INCIDENTAL, EXEMPLARY, PUNITIVE OR CONSEQUENTIAL DAMAGES, HOWEVER CAUSED, WHETHER FOR BREACH OF WARRANTY, NEGLIGENCE, STRICT LIABILITY OR OTHERWISE, EVEN IF TASER INTERNATIONAL HAS BEEN ADVISED OF THE POSSIBILITY OF SUCH DAMAGES OR IF SUCH DAMAGE COULD HAVE BEEN REASONABLY FORESEEN, AND NOTWITHSTANDING ANY FAILURE OF ESSENTIAL PURPOSE OF ANY EXCLUSIVE REMEDY PROVIDED HEREIN. SOME STATES DO NOT ALLOW FOR THE LIMITATION OR EXCLUSION OF LIABILITY FOR INCIDENTAL OR CONSEQUENTIAL DAMAGES, SO THE ABOVE LIMITATION OR EXCLUSION MAY NOT APPLY TO YOU.

For international warranty information, please go to www.TASER.com.

TASER® C2 FEATURES

Replaceable Cartridge

0 - 15' Range
safely stop attackers

30-Second Cycle
escape unsafe situations

CheckLok™
*computer background checks
deter misuse*

Integrated LED Light

Illuminate Dark Environments

Optional Laser Sight

Provides Precision Accuracy

Trigger Safety Cover

Protects Trigger from Accidental Activations

Lithium Power Magazine

Delivers 50 + Firings

Ergonomic Grip

Fits all Hand Sizes

TASER C2 FEATURES

- 0 - 15' Range
- Lightweight & Compact
- Portable
- Integrated LED Light
- Built in Safety Features
- Optional Laser Sight
- Shaped Pulse Technology
- Replacement Guarantee
- 90-Day Limited Warranty
- Lithium Power Magazine

PACKAGE CONTENTS

- TASER C2
- Training DVD Video
- 15' Replaceable Cartridge
- Operating Manual
- Lithium Power Magazine

TASER devices are not considered firearms by the U.S. government. They can be legally carried (concealed or open) without a permit required in 40 + states. Prohibited citizen use in DC, HI, MA, MI, RI, NY, NJ, WI & certain cities & counties. CT and IL legal with restrictions. Check local laws on carrying electronic control devices.