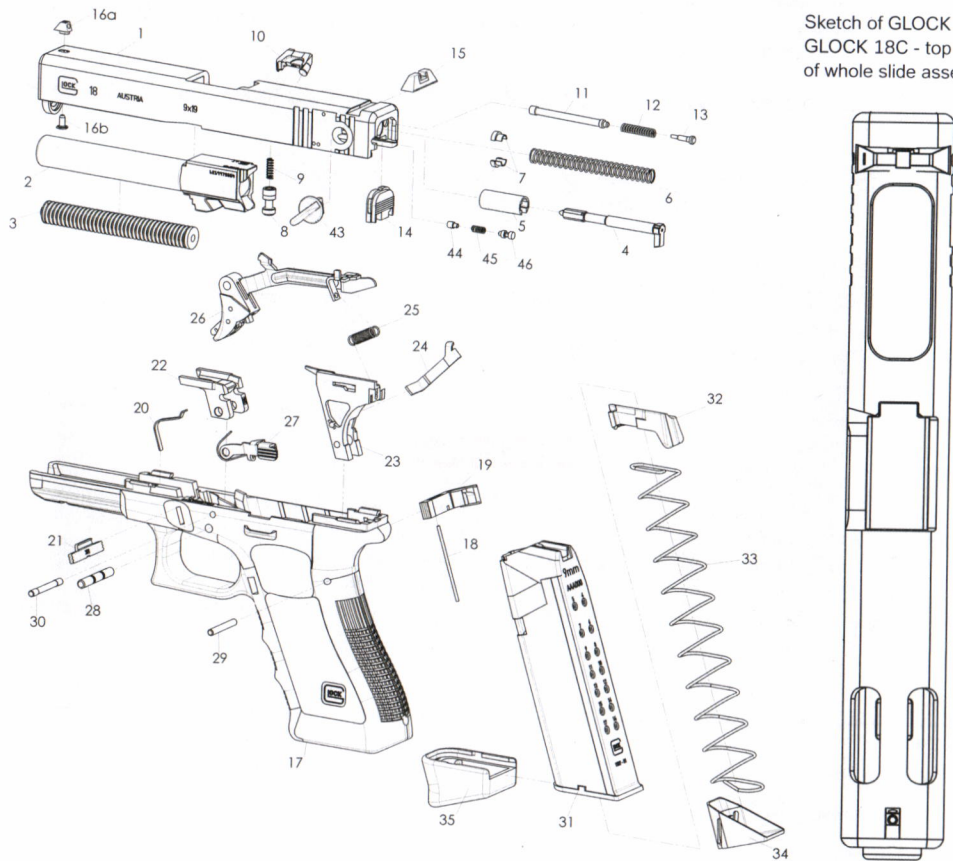


## Exploded Drawing

Sketch of GLOCK 18 /  
GLOCK 18C - top view  
of whole slide assembly



- |    |                                       |     |   |    |                               |
|----|---------------------------------------|-----|---|----|-------------------------------|
| 1  | Slide                                 | 14  | Slide cover plate                         | 26 | Trigger with trigger bar      |
| 2  | Barrel                                | 15  | Rear sight                                | 27 | Slide stop lever              |
| 3  | Recoil spring assembly                | 16a | Front sight                               | 28 | Trigger pin                   |
| 4  | Firing pin                            | 16b | Front sight screw                         | 29 | Trigger housing pin           |
| 5  | Spacer sleeve                         | 17  | Frame                                     | 30 | Locking block pin             |
| 6  | Firing pin spring                     | 18  | Magazine catch spring                     | 31 | Magazine tube                 |
| 7  | Spring cups                           | 19  | Magazine catch                            | 32 | Follower                      |
| 8  | Firing pin safety                     | 20  | Slide lock spring                         | 33 | Magazine spring               |
| 9  | Firing pin safety spring              | 21  | Slide lock                                | 34 | Magazine insert               |
| 10 | Extractor                             | 22  | Locking block                             | 35 | Magazine floor plate          |
| 11 | Extractor depressor plunger           | 23  | Trigger mechanism housing<br>with ejector | 43 | Selector lever                |
| 12 | Extractor depressor plunger<br>spring | 24  | Connector                                 | 44 | Selector lever pin            |
| 13 | Spring loaded bearing                 | 25  | Trigger spring                            | 45 | Selector lever spring         |
|    |                                       |     |   | 46 | Selector lever spring bearing |

## GLOCK Accompanying Sheet GLOCK 18 | GLOCK 18C

www.glock.com



### **⚠ WARNING!**

This manual shall serve as additional instruction manual specifically for the GLOCK 18 / GLOCK 18C „Selective Fire“ semi/full-automatic submachine pistol. The integrated compensator enables the shooter to hold the pistol well stable and facilitates precise shooting even while in automatic mode.

For all general and main features as well as basic functions, safety devices, loading, unloading and dismantling the provided GLOCK Instructions for Use Manual is applicable and shall be thoroughly studied before use of the pistol.

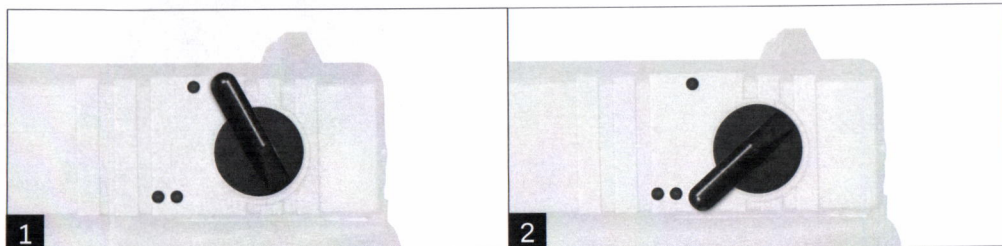
The following contents shall complete this information and comprise

## Special Instructions

<b>Action System</b>	GLOCK Safe Action®, recoil operated, hammerless
<b>Locking System</b>	mechanically locking, tilting barrel
<b>Fire Selector</b>	<b>upper position (one dot ●)</b> semi-automatic firing mode <b>lower position (two dots ●●)</b> full-automatic firing mode (bursts controllable through trigger)
<b>Rate of fire (theoretical)</b>	1.300 rounds/minute
<b>Compensator (GLOCK 18C)</b>	built in compensator with four ports in the barrel and a special window in the slide

### ⚠ WARNING!

Pay attention that the compensator releases hot gases and maybe even powder particles and others in an upward direction! Therefore never expose any parts of your body or other bodies or sensitive materials in the area that is affected by the compensator.



#### 1) Semi-automatic:

When the selector (part no. 33) rests in its upper position (pointing to indication „●“ in the slide – see photo above) the semi-automatic mode is selected. The GLOCK 18 / GLOCK 18C will work in this mode as the GLOCK 17, GLOCK 17L or GLOCK 19 pistols.

#### 2) Full-automatic mode:

When the selector (part no. 33) rests in its lower position (pointing to indication „●●“ in the slide – see photo above) the full-automatic mode is selected.

#### Special precautions and recommendations regarding use of GLOCK 18 / GLOCK 18C in full-automatic mode:

Safe carrying mode: It is recommended to carry the GLOCK 18 / GLOCK 18C in the semi-automatic mode in its respective duty holster.

## Getting used | Training

As the GLOCK 18 / GLOCK 18C is a completely new and extremely small-sized submachine pistol and as it also does not require a shoulder-stock it is recommended to get used gradually when firing full-automatic. Therefore training should be started with magazines loaded with 3 then 5, then 8 etc. rounds in order to successfully control the pistol.

The barrel-integrated compensator of the GLOCK 18 / GLOCK 18C further provides the user with stable shooting properties.

Furthermore the rifle stance is to be preferably used. The pistol may fire trigger-controlled bursts or fire continuously the whole magazine by constantly pulling the trigger.

## Disassembling

Please refer to main instruction manual for basic operations and safety procedures. In any case the selector must be in semi-automatic position for separating the slide from the receiver.

### ⚠ WARNING!

The manufacturer strongly recommends expressly that only special law-enforcement, SWAT and specially trained military personnel should, as a general rule, be allowed to handle the GLOCK 18 / GLOCK 18C, as the effective and safe firing of a pistol in full-automatic mode requires special training and personal discipline.

TECHNICAL DATA	G18	G18C
CALIBER	9mm Luger	
MAGAZINE CAPACITY <sup>1</sup>	Std. 19   Opt. 33	
LENGTH (OVERALL)	204 mm   8.03 inch	
SLIDE LENGTH	186 mm   7.32 inch	
BARREL LENGTH	114 mm   4.49 inch	
WIDTH (OVERALL)	34 mm   1.34 inch	
SLIDE WIDTH	29,5 mm   1.16 inch	
HEIGHT INCL. MAGAZINE	155 mm   6.10 inch	
SIGHT RADIUS	165 mm   6.50 inch	
BARREL RIFLING	6	
WEIGHT INCL. MAGAZINE	705 g   24.87 oz	670 g   23.63 oz
WEIGHT LOADED*	940 g   33.16 oz	905 g   31.92 oz
MUZZLE VELOCITY*	325 m/s   1066 fps	
MUZZLE ENERGY*	425 J	405 J
TRIGGER TRAVEL	12,5 mm   0.49 inch	
TRIGGER PULL	6.3 lbs   28 N	

\* Depending on ammunition. Technical data are rounded and do not reflect tolerances – they may be altered without notice. <sup>1</sup> Some magazines might not be available in all countries due to legal regulations.